



34th Biennial Institute
FOR **Georgia Legislators**

Workforce Challenges



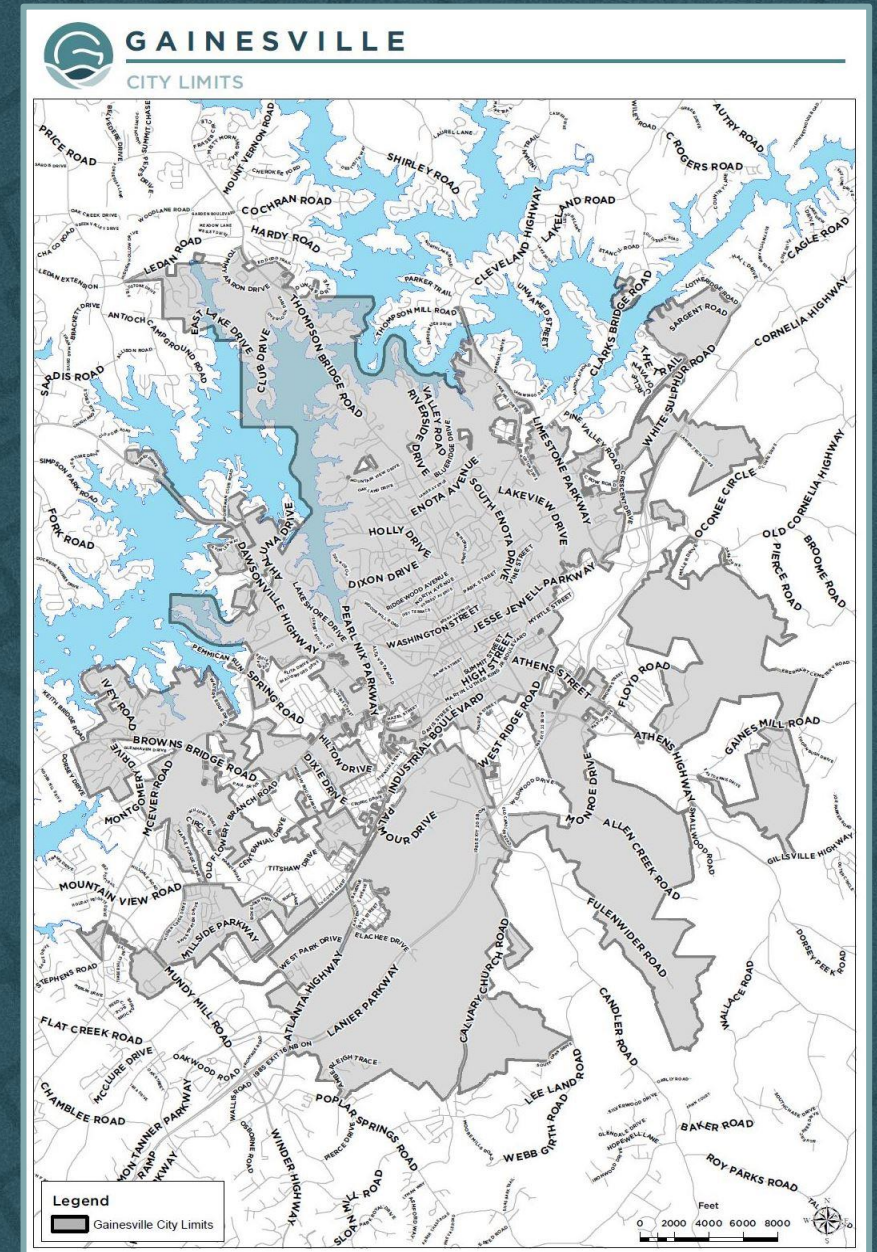


Workforce Challenges: *Housing*

City of Gainesville
Workforce Challenges Panel
December 9, 2024

GAINESVILLE FACTS

- Population ~ 48,000 people
- Employment, medical & retail hub for Northeast Georgia
 - *Daytime Population grows to ~ 150,000*
- Diversified employment base, including several international firms
 - 43.8% = Services (Retail/Wholesale Trade, Hospitality, Financial, Transportation/Warehousing)
 - 29.7% = Goods Producing (Agriculture, Mining, Advanced Manufacturing, Food Processing, Logistics, Construction)
 - 15.5% = Healthcare Services
 - 11.0% = Government
 - 0.2% = Unclassified
- Three higher education institutions located within the City
 - *Brenau University*
 - *North Georgia University*
 - *Lanier Technical College*
- Lake Lanier, which hosts nearly 12 million visitors annually



PRIVATE RESIDENTIAL



TRAILSIDE COTTAGES



Gainesville Housing Authority Property





New Construction

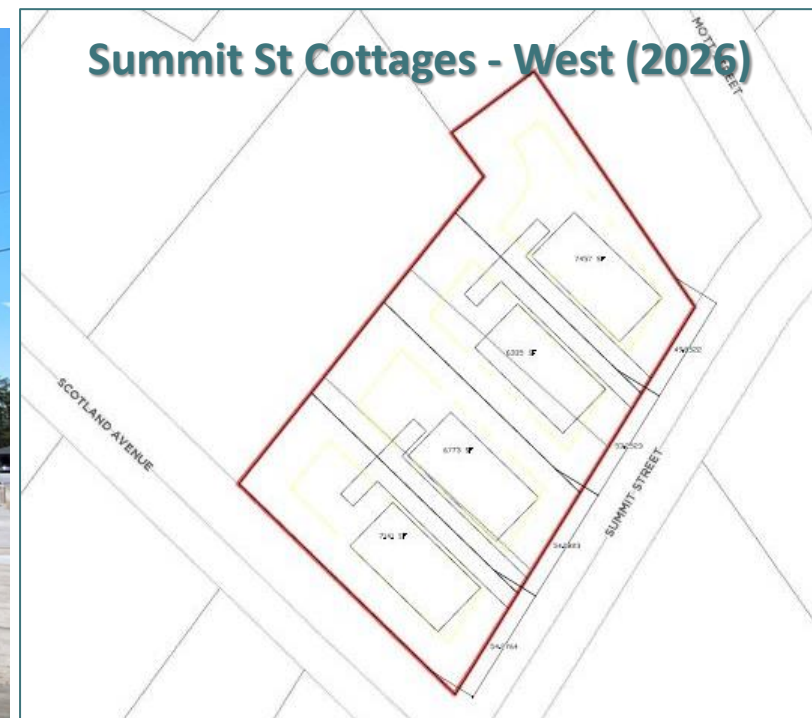
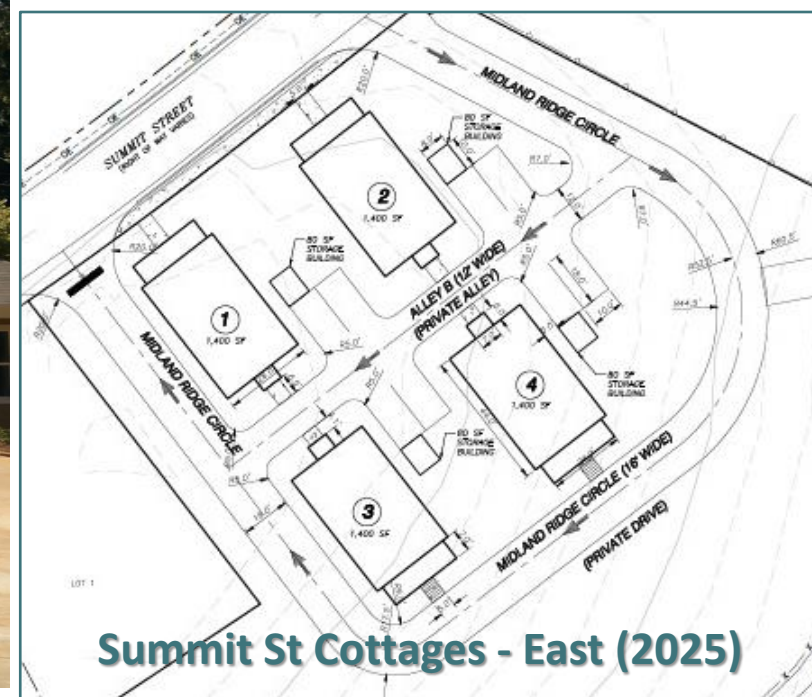
- Northwestern Cottages
 - *\$1 million HOME Grant from DCA*
 - *GNDF Property*
 - *City + GNDF*
- Davis Street Cottages
 - *HOME Grant P.I.*
 - *HOME + CHIP Grants*
 - *City + GNDF*
- Summit Street Cottages – East & West
 - *HOME and CHIP Grant P.I.*
 - *CHIP Grant*
 - *CDBG Grant*
 - *Land Bank Property and GNDF Property*
 - *City + GHLBA + GNDF*

Biennial Institute for Georgia Legislators | December 9, 2024

GAINESVILLE



Davis Street Cottages Interior



RURAL WORKFORCE HOUSING INITIATIVE



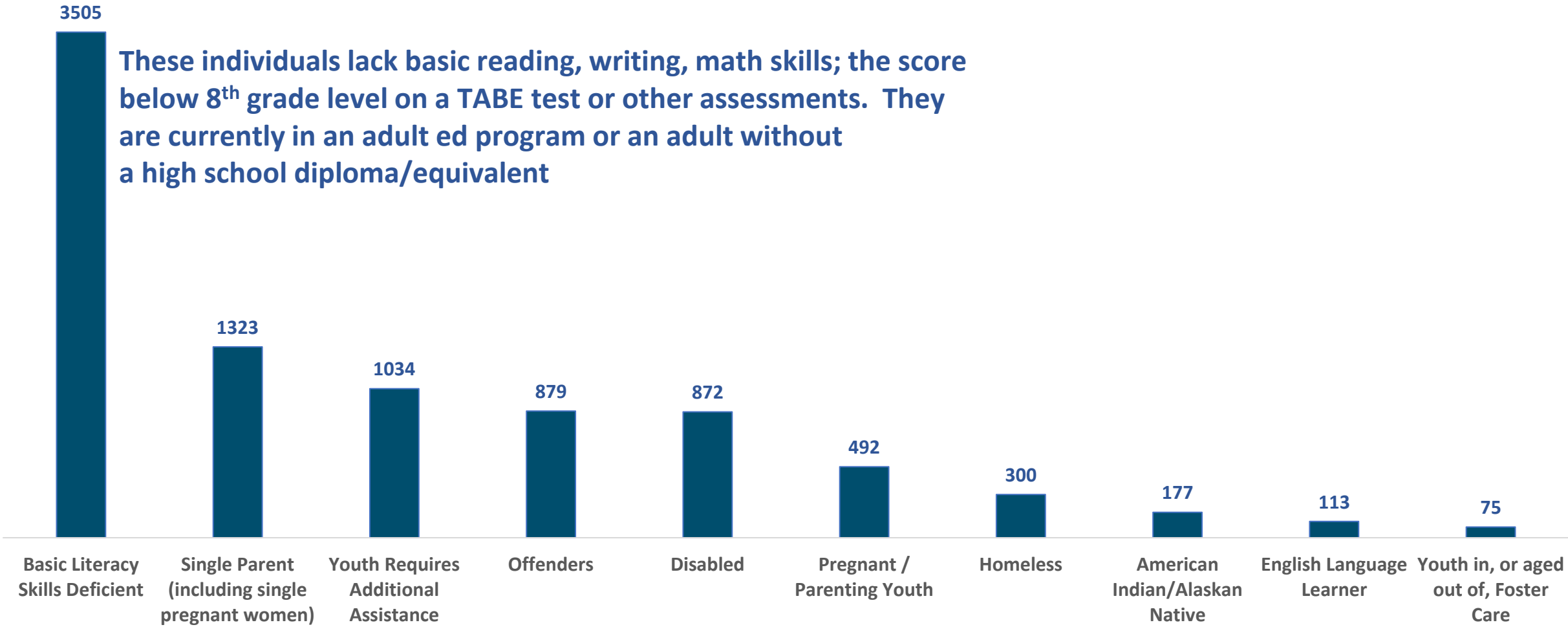


THANK YOU!

Jessica Tullar, AICP
Housing & Special Projects Manager
Email: JTullar@gainesvillega.gov
Phone: (770) 531-6574

Over ONE MILLION
Georgians lack basic
literacy skills.

2023 WIOA Title 1 Participant Characteristics





34th Biennial Institute
FOR Georgia Legislators